

## Southbank Rubbings Project



Southbank Rubbings Calendar 2016

## Introduction to Southbank Rubbings Project

I approached the Southbank in 2013 with the idea of making a series of rubbings on the site of the Hayward Gallery (HG) and Queen Elizabeth Hall (QEH) when plans were announced to make extensive changes to what was then being referred to as the Festival Wing. I had long wanted to do this and their proposal to make significant change gave the idea some urgency. I particularly wanted to record areas of the site that would be removed and/or enclosed. The effect of enclosing would be to alter the rate of weathering which would affect the concrete's appearance and texture.

After some stops and starts, I eventually spent two weeks in September/October 2015, prior to the site's closure, making rubbings both inside and outside the buildings. Following a health and safety induction and, having established that I had a high vis vest, the estates team more or less let me loose.

I'd initially thought I might only have exterior access and had various ideas about how I might approach the site. For example, I could, at each level, walk the circumference and take rubbings at regular intervals at my shoulder height. In the event, I realised that using this chance methodology would mean that I might miss the variety of materials and surfaces. I imposed the 'only make rubbings of surfaces I can reach' rule because asking to use ladders would impose difficult health and safety constraints and I wanted the rubbings to reflect my physical relationship to the site and myself in relation to it.

My method, such as it was, was to record the range of surfaces of the materials used on site – concrete both poured in-situ and pre-cast, and the various woods and metals used, both internally and externally.

I was assisted on two days (and on a preliminary recce in 2014) by Dan Dowling and, on the final weekend, by Simon Wallace who was also instrumental in the preparation of the calendar. The images in the calendar represent a small selection of the 71 rubbings (some multi-part) that were made. Thanks to Dan and Simon and to everyone at the Southbank: Mike McCart, Clare Wood, Hilton Wells, Kim Schofield, Bode Akanbi, all the security people who helped me on site, the people who led the National Trust and Southbank Centre Brutal Utopia 'work in progress' tour, and Ray O'Halloran, former Director of Estates & Facilities, for enabling this project.

Southbank Rubbings Calendar 2016 is a limited edition of ten.  
This calendar is No. \_\_\_\_/10.

## Southbank Rubbings



© B.A.Zanditon

**Description:** Hayward Gallery. Small wooden access door on terrace by red staircase bordered by Waterloo Bridge and Belvedere Road. Rubbing of wooden door shown in situ.

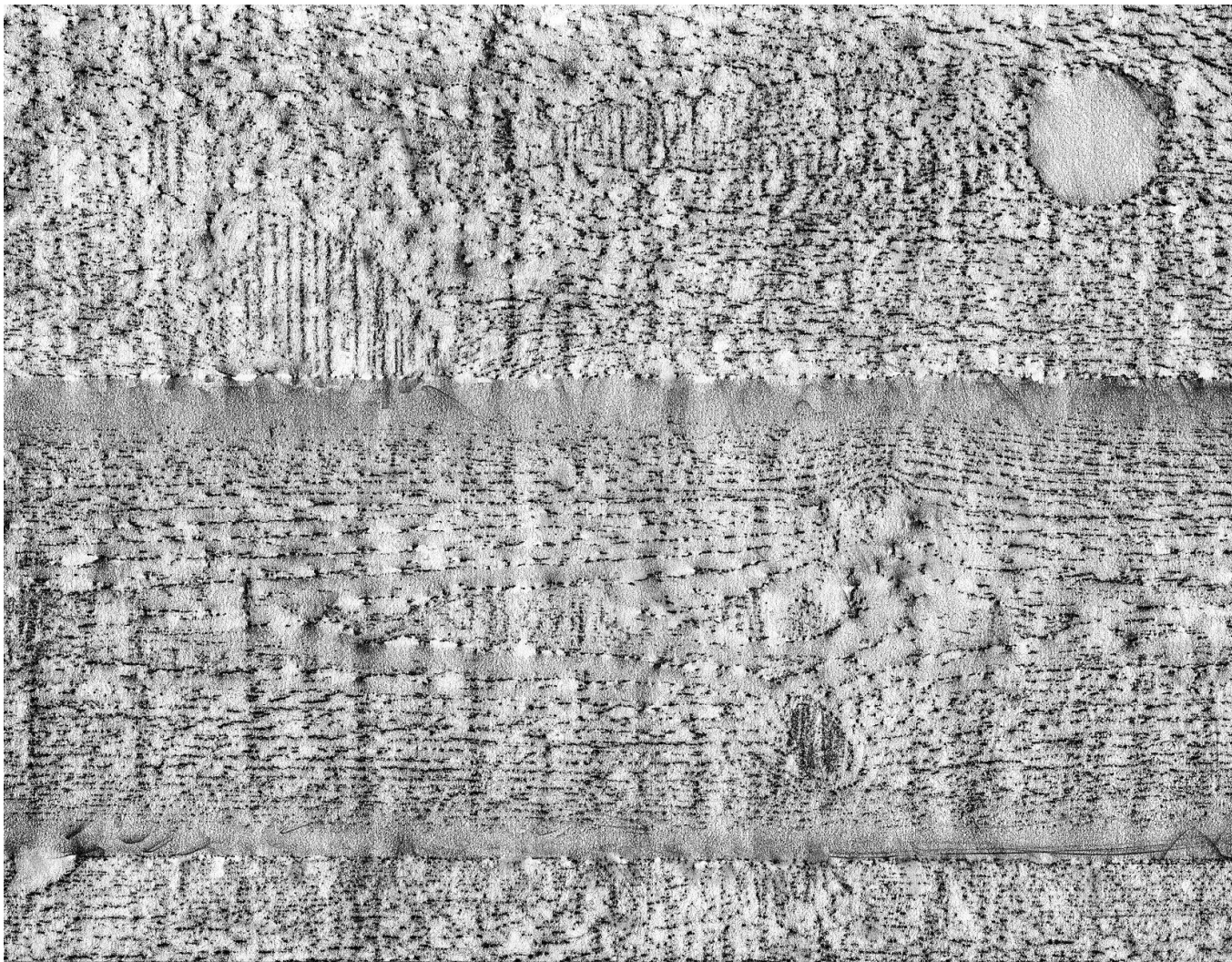
**Document Number:** R66.

**Date:** 04.10.15.

**Materials:** Brass rubbing crayon on Tyvek, 110cm high x 66.3cm across.

**Location viewed facing:**

Compass point	Latitude			Longitude		
231 ° SW	51°	30'	21"	0°	6'	53"



**Description:** Hayward Gallery. Concrete wall perpendicular to wooden door marked Fire Exit. The image has been turned 90 degrees counterclockwise to fit the page.

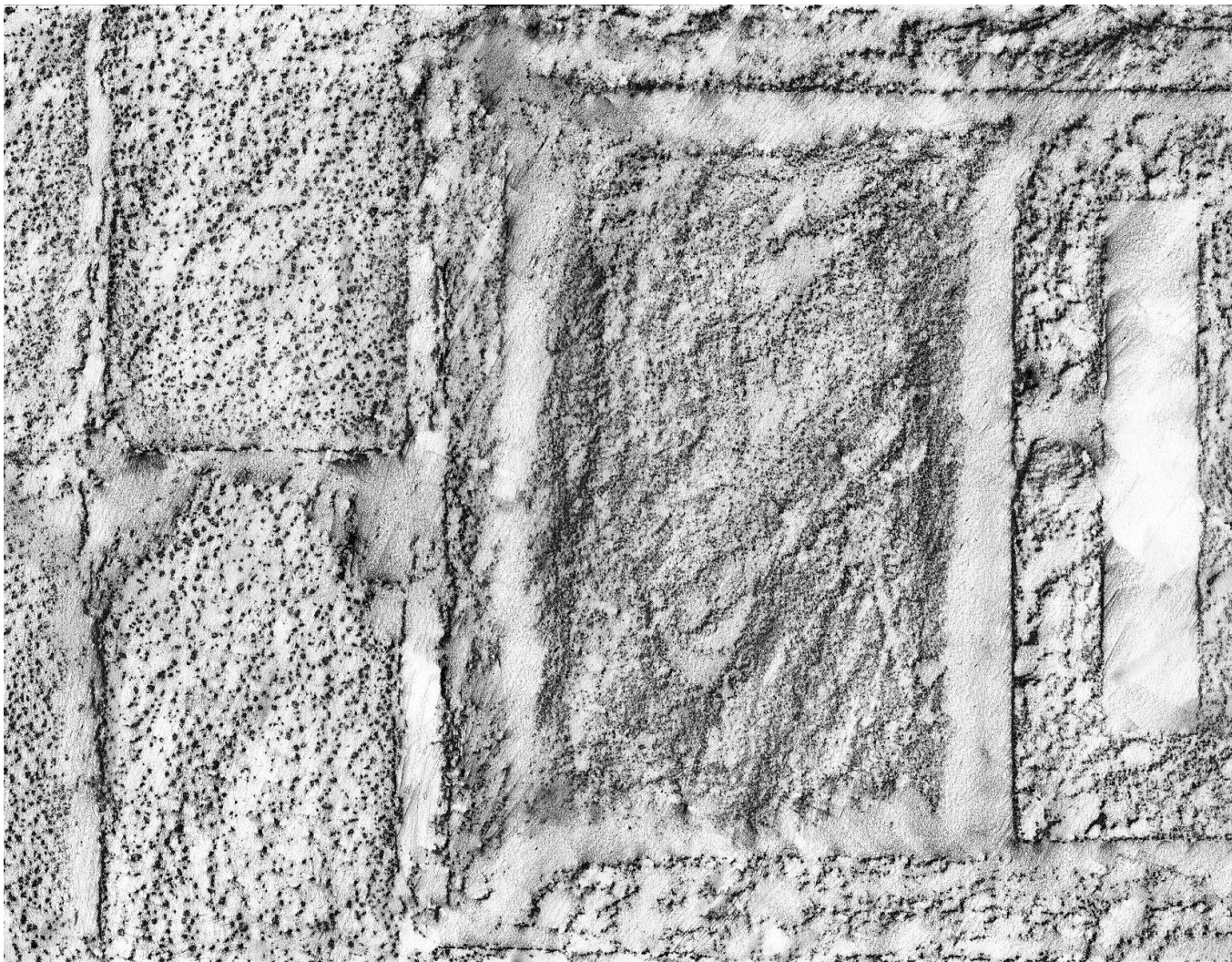
**Document Number:** R4.

**Date:** 24.09.15.

**Materials:** 2B graphite stick on A3 130gsm smooth cartridge paper.

**Location viewed facing:**

Compass point	Latitude			Longitude		
171 ° S	51°	30'	23"	0°	6'	57"



**Description:** Hayward Gallery. Upper Gallery: terrace facing Royal Festival Hall. Metal grating on terrace showing abutment with concrete tiled floor surface – left end. One of three rubbings showing the full length of the grating. The reverse of the rubbing shows mud and moss stains.

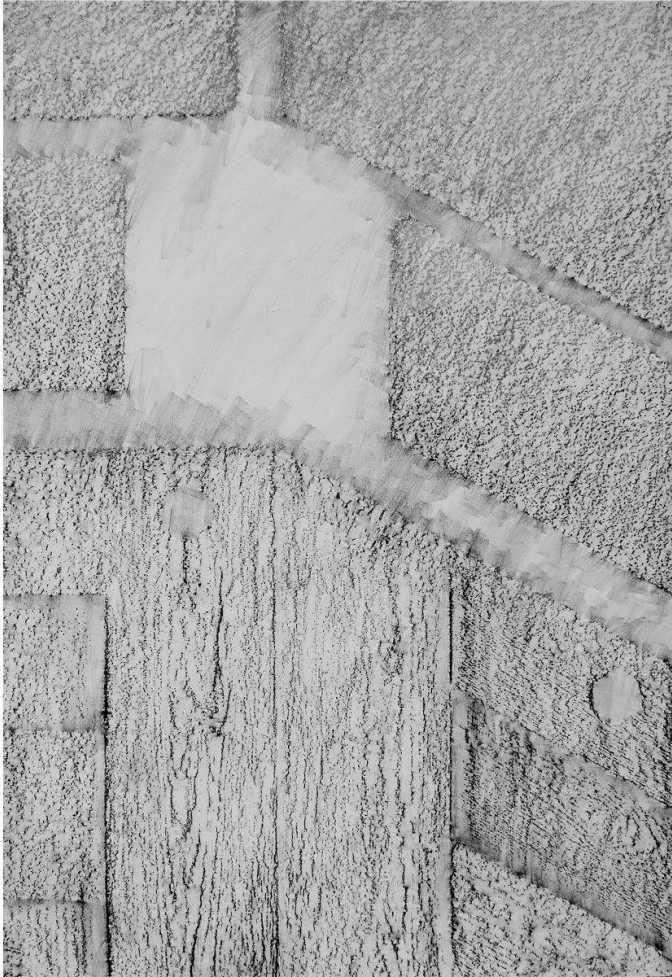
**Document Number:** R5.1.

**Date:** 25.09.15.

**Materials:** 2B graphite stick on A3 130gsm smooth cartridge paper.

**Location viewed facing:**

Compass point	Latitude			Longitude		
231 ° SW	51°	30'	22"	0°	6'	56"



**Description:** Hayward Gallery. Terrace stairs, leading to enclosed garden area, opposite Belvedere Road.

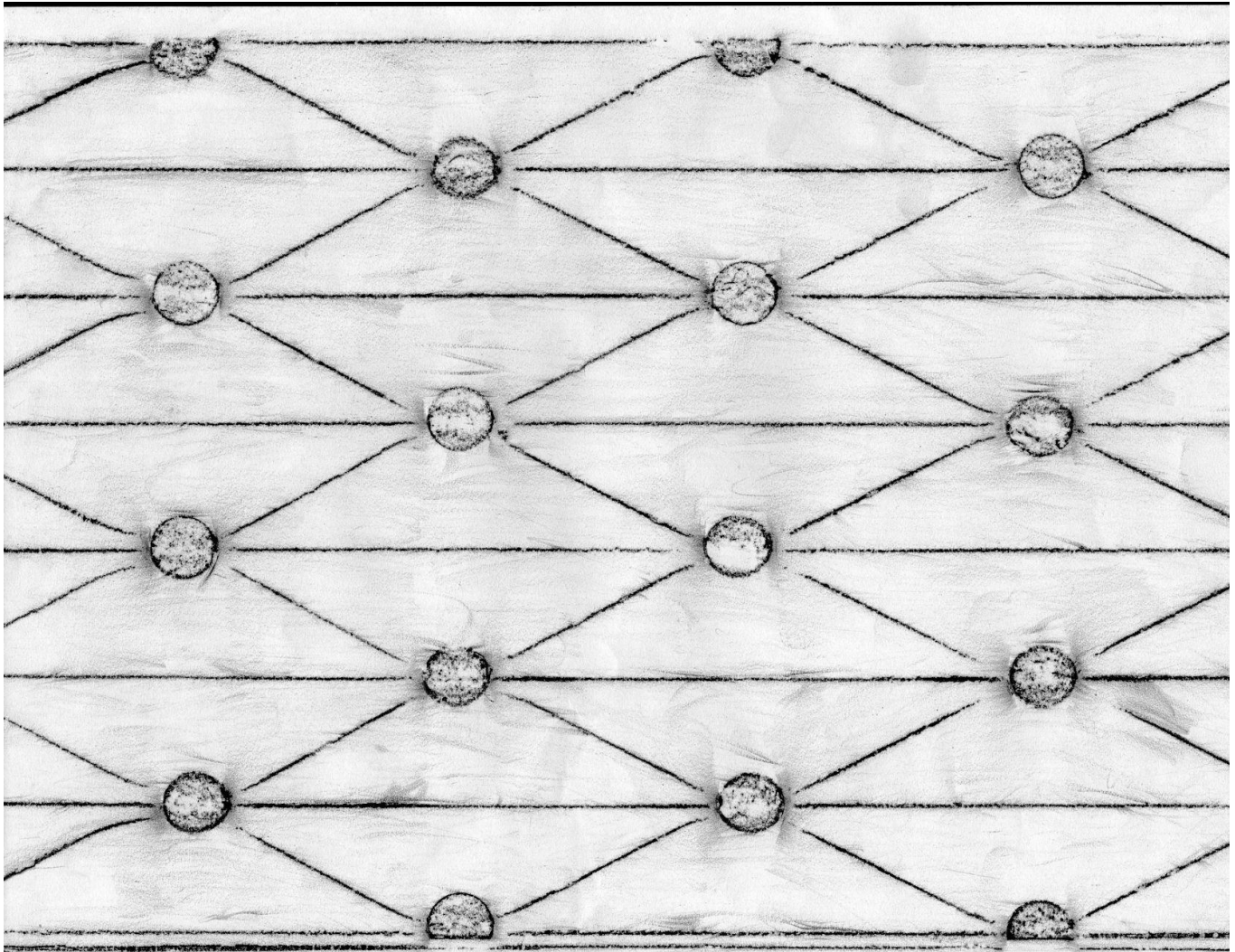
**Document Number:** R2.

**Date:** 24.09.15.

**Materials:** 2B graphite stick on A1 110gsm smooth cartridge paper.

**Location viewed facing:**

Compass point	Latitude			Longitude		
340 ° NW	51°	30'	22"	0°	6'	56"



**Description:** Queen Elizabeth Hall. Plant Room. Metal stair tread.

**Document Number:** R44.

**Date:** 01.10.15.

**Materials:** Brass rubbing crayon on A3 130gsm smooth cartridge paper.

**Location viewed facing:**

Compass point	Latitude			Longitude		
126° SE	51°	30'	23"	0°	6'	57"



**Description:** Hayward Gallery. Car park under Hayward Gallery. Mushroom pillar circumference. Rubbing taken approximately 152 cm from ground.

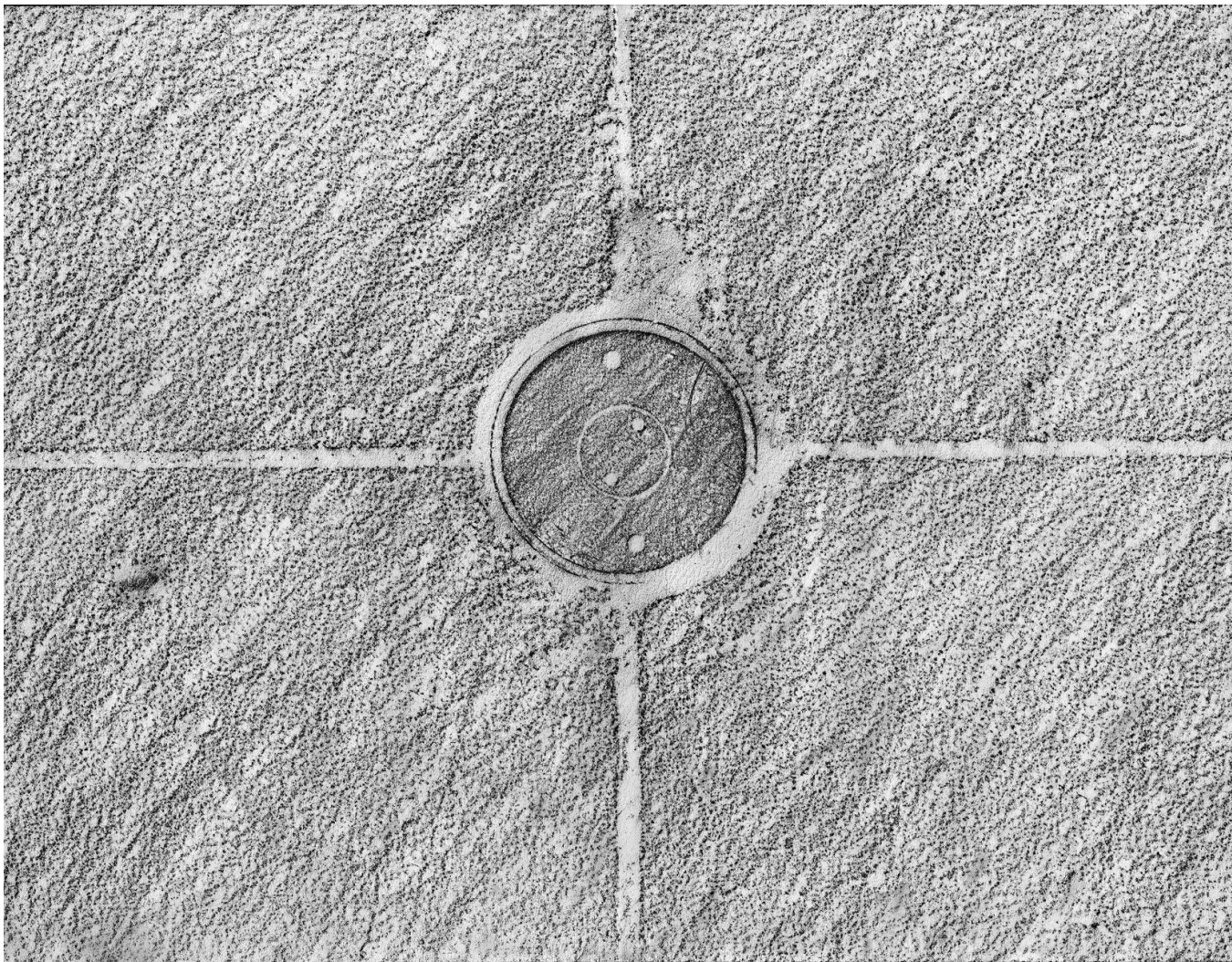
**Document Number:** R17.

**Date:** 28.9.15.

**Materials:** Brass rubbing crayon on Tyvek, 91.5cm high x 261cm across.

**Location viewed facing:**

Compass point	Latitude			Longitude		
47° NE	51°	30'	24"	0°	6'	58"



**Description:** Hayward Gallery: Upper Gallery floor.

**Document Number:** R9.

**Date:** 25.09.15.

**Materials:** 2B graphite stick on A3 130gsm smooth cartridge paper.

**Location viewed facing:**

Compass point	Latitude			Longitude		
332° NW	51°	30'	22"	0°	6'	56"



**Description:** Hayward Gallery. Stalagmite on terrace off red stairs, corner Belvedere Road and Waterloo Bridge.

**Document Number:** R36.

**Date:** 01.10.15.

**Materials:** Brass rubbing crayon on Tyvek, 91.5cm high x 146.4cm across.

**Location viewed facing:**

Compass point	Latitude			Longitude		
225° SW	51°	30'	22"	0°	6'	52"



**Description:** Hayward Gallery. Terrace area near front entrance to the gallery. Drain.

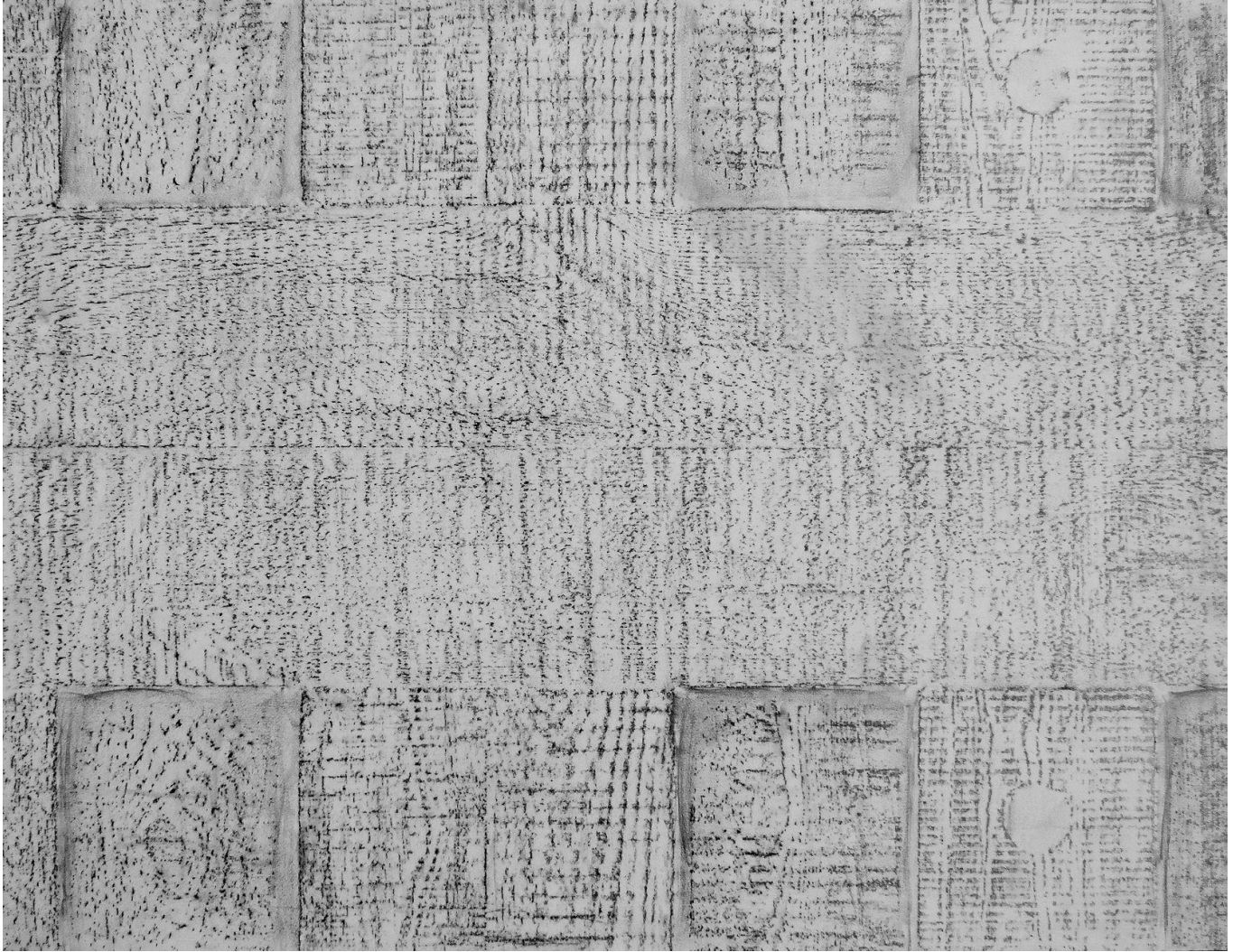
**Document Number:** R34.

**Date:** 30.09.15.

**Materials:** 6B graphite stick on A1 110gsm smooth cartridge paper.

**Location viewed facing:**

Compass point	Latitude			Longitude		
62 ° NE	51°	30'	23"	0°	6'	57"



**Description:** Hayward Gallery. Terrace wall at end of concrete bench with open square grid pattern facing Royal Festival Hall site.

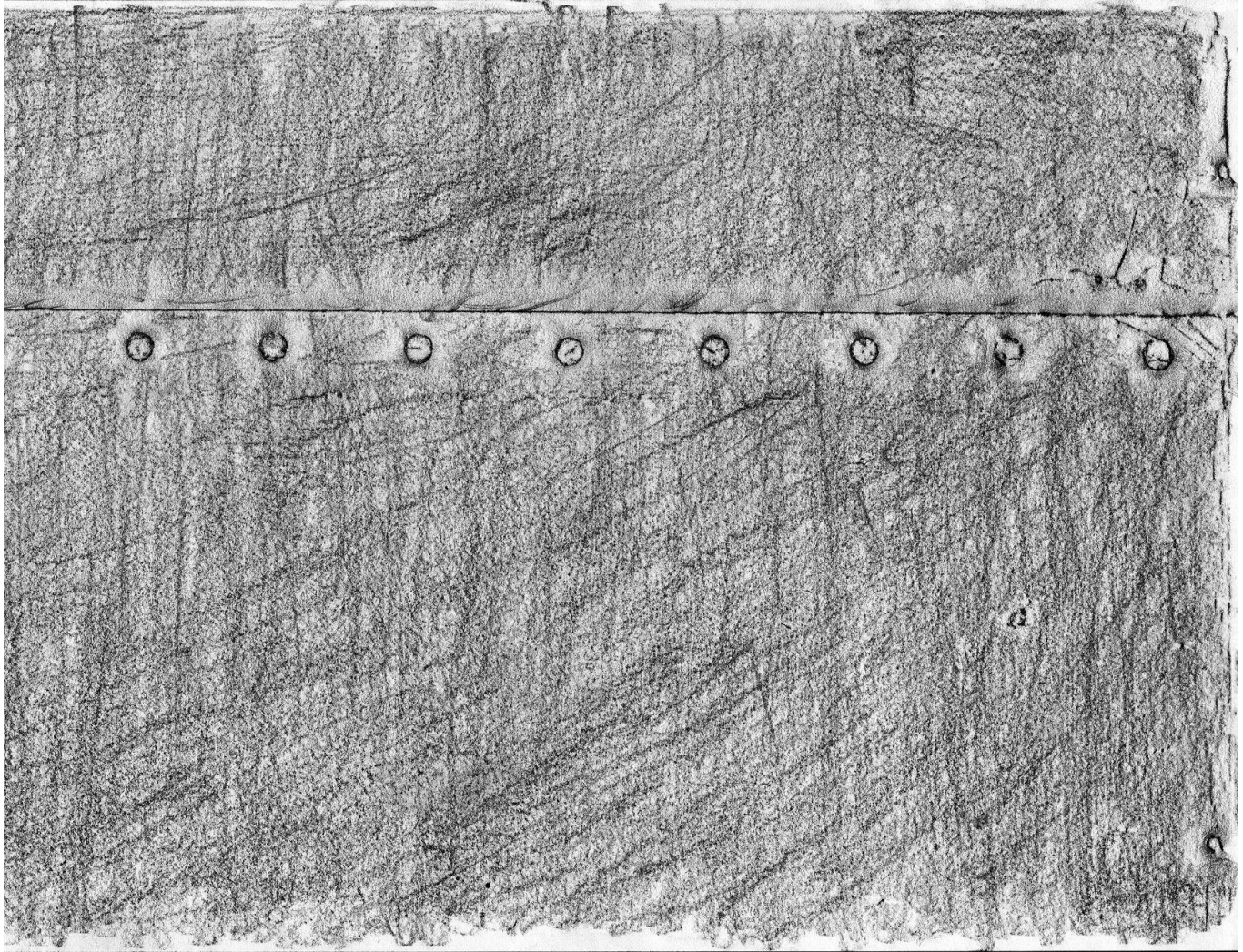
**Document Number:** R32.

**Date:** 30.09.15.

**Materials:** 2B graphite stick on A1 110gsm smooth cartridge paper.

**Location viewed facing:**

Compass point	Latitude			Longitude		
139° SE	51°	30'	22"	0°	6'	59"



**Description:** Queen Elizabeth Hall. Plant Room. Steel plate covering machinery. The orientation of the rubbing is unclear as this is an undocumented work. The image is shown horizontally though it is correctly on the vertical.

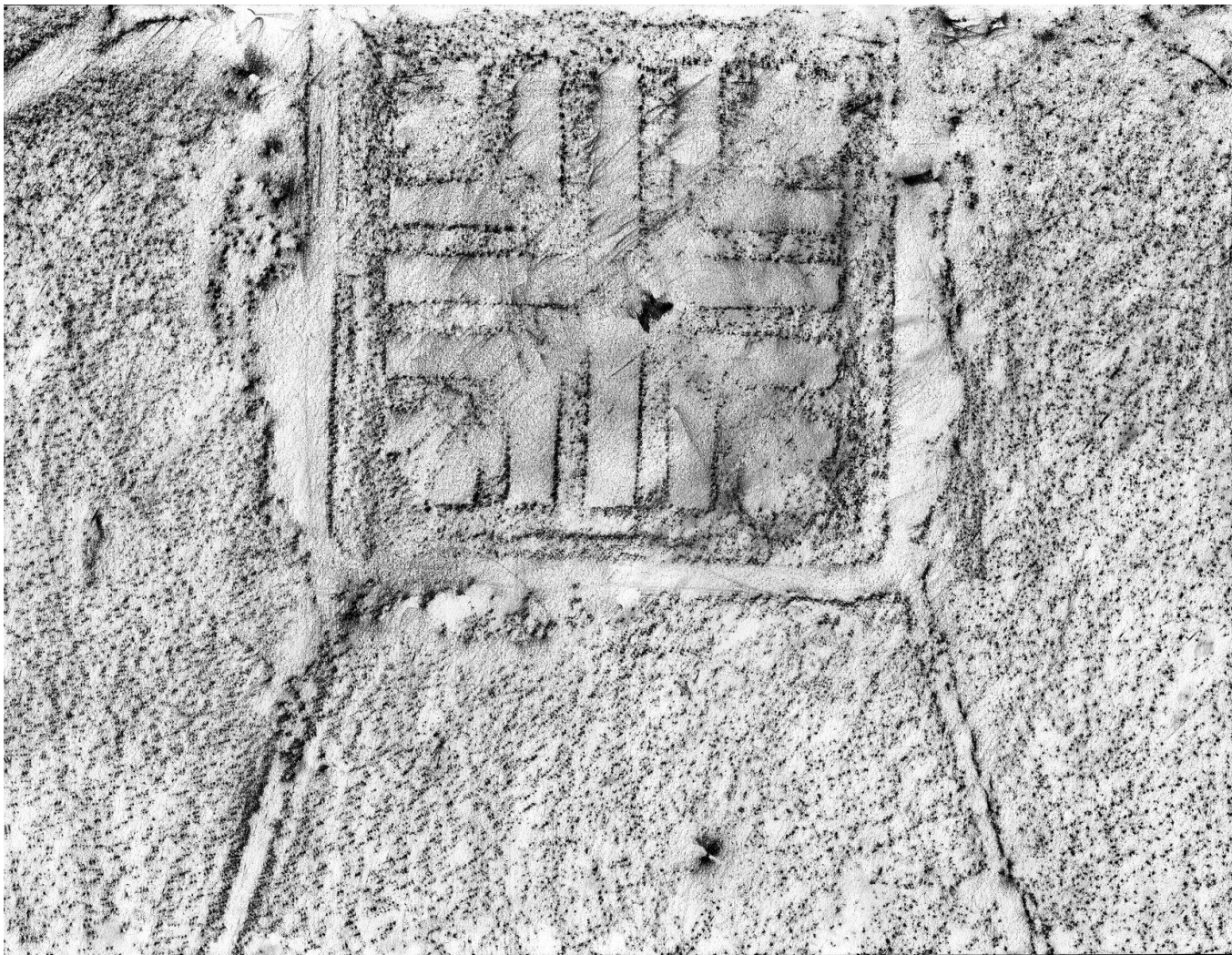
**Document Number:** R47.

**Date:** 01.10.15.

**Materials:** 2B graphite stick on A3 130gsm smooth cartridge paper.

**Location viewed facing:**

Compass point	Latitude			Longitude		
Undocumented						



**Description:** Hayward Gallery. Drain on landing, red staircase one turn above the terrace level corner Belvedere Road and Waterloo Bridge.

**Document Number:** R70.

**Date:** 04.10.15.

**Materials:** Brass 2B graphite stick on A3 130gsm smooth cartridge paper.

**Location viewed facing:**

Compass point	Latitude			Longitude		
328 ° NW	51°	30'	22"	0°	6'	54"



**Description:** Queen Elizabeth Hall. Plant Room. "Dressing Room Supply" sign on wall.

**Document Number:** R49.

**Date:** 01.10.15.

**Materials:** 2B graphite stick on A2 130gsm smooth cartridge paper.

**Location viewed facing:**

Compass point	Latitude			Longitude		
128 ° SE	51°	30'	24"	0°	6'	57"